

KURT-Shuttle electrical vehicle platform

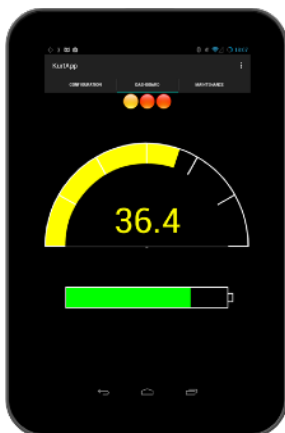
Re-inventing electric driving for urban mobility



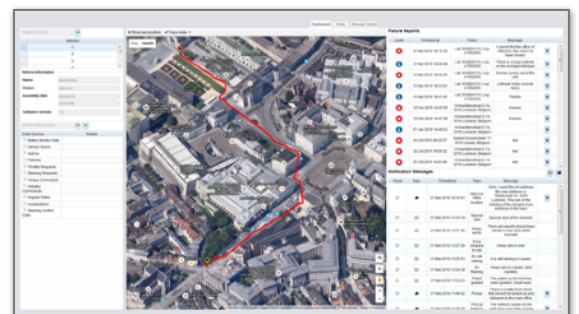
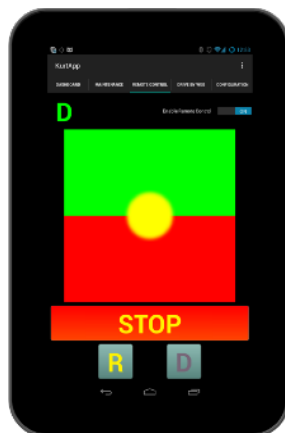
The KURT-Shuttle is the larger version of the space and energy-saving City-KURT e-vehicle for urban electro-mobility. Being larger, it drives on the streets and has a higher load capacity, yet the KURT-shuttles can be used alongside the smaller City-KURTs and share the charging/waiting KURT-Stations and micro-depots.

The smaller version can either transport four persons with ample space for small parcels, or a small pallet together with some parcels. The larger version can either transport eight seated people and four people standing or a heavy industrial pallet and parcels.

Electronically controlled, it is powered by 4 active wheels for easy manoeuvrability and fast acceleration. Its powerful batteries can cover the whole day, recharged during the night or when parked. KURT-Shuttle provides the lowest air and noise pollution at the lowest energy cost, yet it takes less space than standard vehicles. The vehicle is optionally remotely monitored. While operated without a driver on board, it can remotely be manoeuvred by a smartphone or over the web.



*Manoeuvring and steering
with smartphone*



Fleet Management

Nov 2017

***KURT: e-mobility à la carte.
Altreonic adapts it to your specific needs.***



Moving people during the peak hours



City Logistics during off peak hours



Micro-depot Station

Multi-functional charging Station

KURT: software defined urban e-mobility